



Rev 13

MEDIUM DUTY TARGET RETRIEVAL SYSTEM

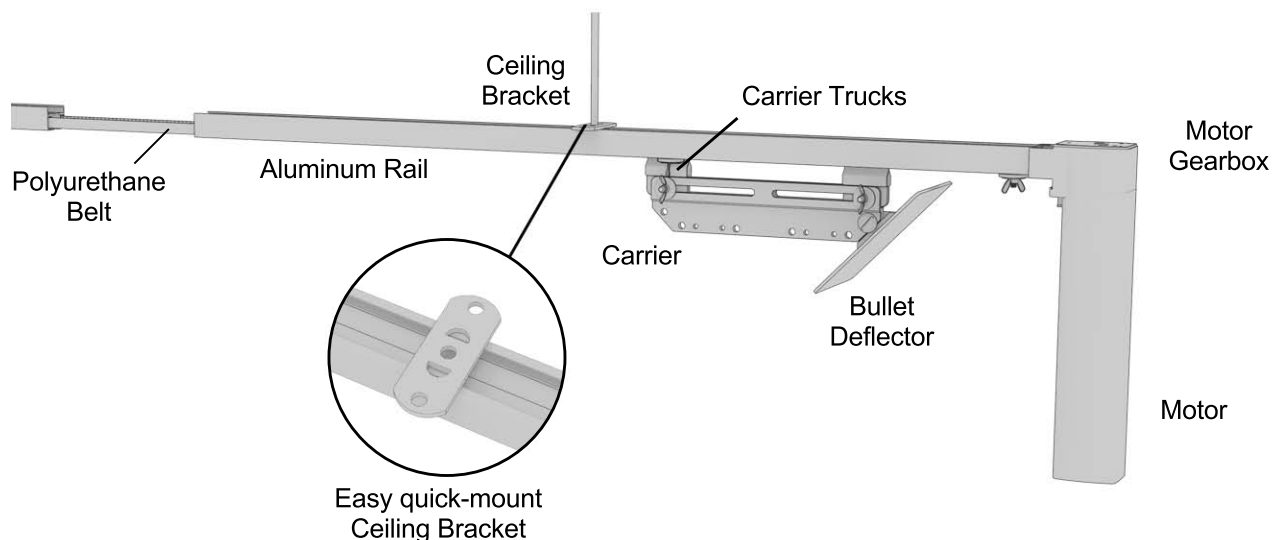
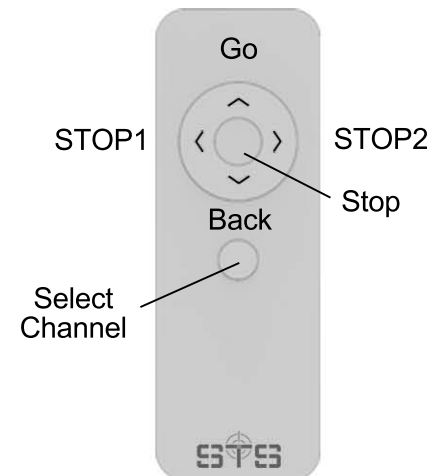
Simple & Affordable

STS is dedicated to providing the most AFFORDABLE solution for the target shooting enthusiasts eager to build their own target retrieval system. Whether that be private, home-based, or commercial. We offer complete target retrieval systems, bullet traps, target monitoring cameras, and other advanced indoor range equipment. Our solutions come with exceptional prices and quality when compared to the competition.

The new **Medium Duty Target Retrieval System** is belt driven and built using inexpensive components. It's easy to install without the need for expensive factory assistance or skilled technicians. However, to ensure a successful installation, a few critical steps must be followed. Please read the following manual carefully so that your system is operating at peak performance.

Medium Duty System Features

- Aluminum Rails
- Metal carrier with rollers and bullet deflector (max 9mm rated)
- Easy to install DIY kit (no need for specialized contractors)
- Inexpensive to maintain and troubleshoot
- High Speed Motor (~2ft/s) with smart technology:
 - Soft start/stop, overload protection, wirelessly controlled
- Up to 50ft capability, belt-driven
- Included Wireless controller with smart functions:
 - Programmable Limits/Stops setup
 - 2 intermediate programmable stopping points (third stop available with special controller)
- Optional Wired Controller available.





Components List (1 Lane):

Aluminum Rail (#TRSX-R1)
Qty: Varies



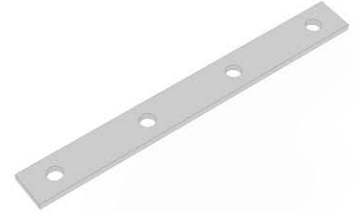
Stopper (#TRSX-MRS)
Qty: 2



Ceiling Mount (#TRSX-CM1)
Qty: 1 per 5ft



Rail Joint (#TRSX-RJ1)
Qty: 1 per 2 sections



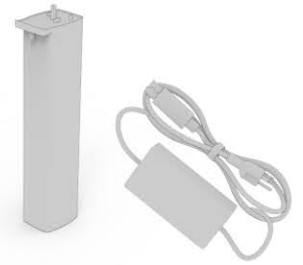
Drive End Unit (#TRSX-RE1)
Qty: 2



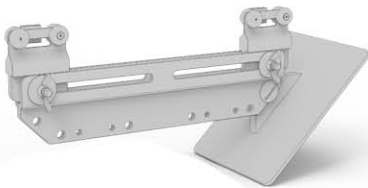
Belt (#TRSX-BT12)
Qty: 2x track length +5"



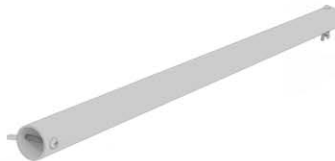
Motor Kit (#TRSX-36024V)
Qty: 1



Target Carrier (#TRSX-TC2)
Qty: 1



Swing Bar (#TRSX-SB10)
Qty: 1

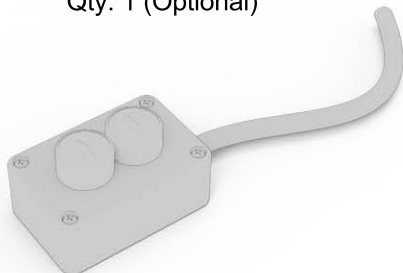


Target Holder (#TRSX-TH2)
Qty: 1



Deflector
Plate

Wired Controller (#TRSX-WT1)
Qty: 1 (Optional)



Wireless Controller (#TRSX-YR1019S)
Qty: 1



Protective Steel End Cap
(#TRSX-GBG1) Qty: 1

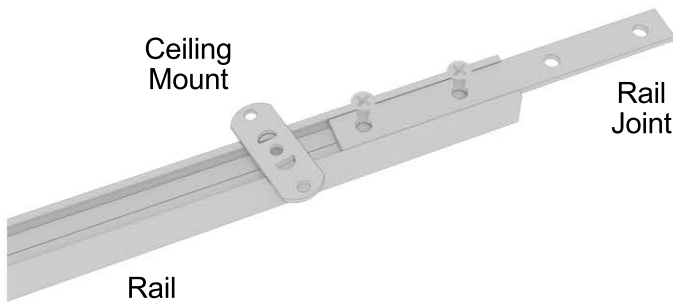




Installation steps

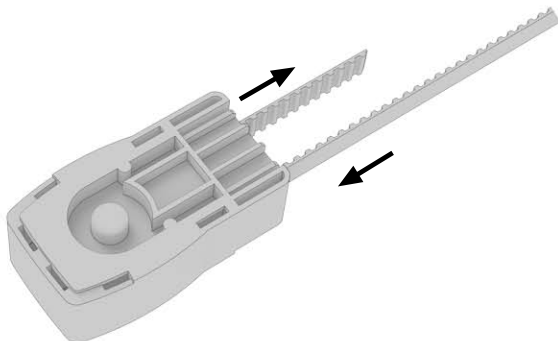
Note: Rails can be mounted directly to the ceiling or suspended using threaded rods. If suspended, use the Ceiling Mount center hole for 3/16" threaded rod.

Step 1: Install the Ceiling Mount brackets onto the first rail segment and twist them to secure in place. Insert Rail Jointer halfway into first rail segment and tighten in place using the pre-inserted screws. Loosely attach first Rail segment with the jointer halfway sticking out, onto the ceiling. Do the exact same thing with the second rail segment then insert it into the first rail jointer. Repeat until the desired track length is met. Verify there are no gaps between the rails, then tighten all hardware.

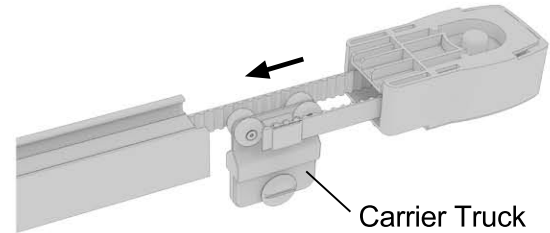


Step 2: Measure and cut the Belt using the formula: $\text{Total Length} = 2 \times \text{track length} + 5"$

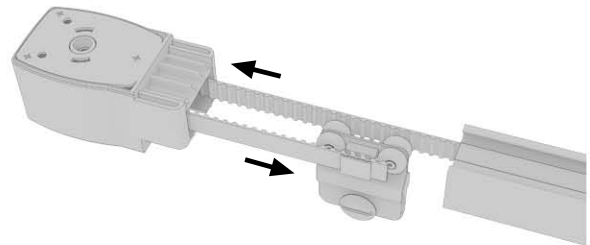
Step 3: Thread the Belt into the first Drive End Unit.



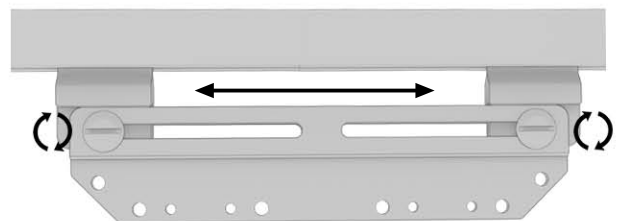
Step 4: Attach one end of the Belt to the first Target Carrier Truck. Insert the truck into the rail and pull it through the full length of the track.



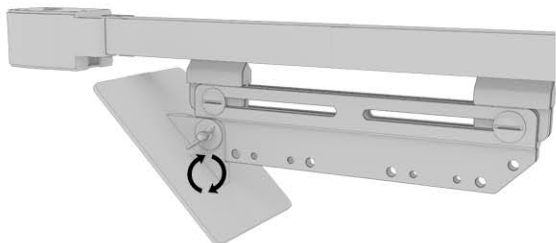
Step 5: On the other side of the rail, thread the Belt through the 2nd Drive End Unit, attach it to the 2nd Carrier truck, then attach the Drive End Unit to the rail.



Step 6: Attach the Carrier trucks together using the metal body and provided screws. Adjust the belt tension to ensure both ends are reasonably tight (you should be able to move the Carrier back and forth in the rail using only with 1 finger).

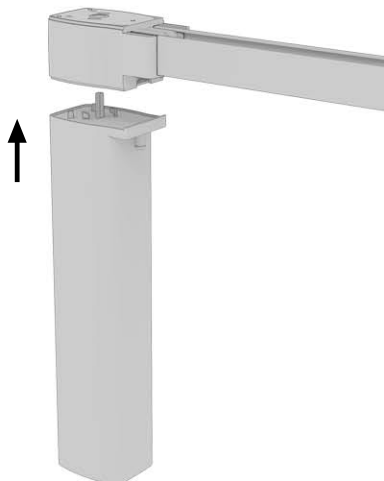


Step 7: Attach the bullet deflector to the Target Carrier.



Step 8: Use your hand to move the Target Carrier back and forth through the rails to ensure it runs smoothly. Correct any obstructions, especially inbetween the rail segments.

Step 9: Install the motor (see Motor Manual for more details).



Step 10: Connect the Power Supply to the Motor and verify movement.

Step 11: Install the Swing Bar, Stoppers and Target Holder.



Troubleshooting Tips

No	Issue	Solution
1	Motor does not start	Check power, check motor LED lights, then check if controller is paired properly (if wireless). Check comms cable is plugged in properly (if wired). See motor manual for details on pairing.
2	Carrier does not move	Check belt tension and reduce if necessary. Try moving Carrier by hand. Check LED lights on motor to make sure it receives controller's commands properly.
3	Carrier stops unexpectedly.	Check for lane obstructions. Clear motor memory of any previous stops. Remove any programmable limits and set them again.
4	Carrier hits hard the rail ends	Setup motor limits
5	Controllers GO and HOME buttons work in reverse	Change motor running direction (see manual)
6	Carrier moving too slow or bangs into rail ends even after setting travel limits	Remove the motor, move the Carrier by hand and look for potential high-friction spots. Check belt tension.

Tel: (331) 431-2621

Sales: sales@supertargetsystems.com

Tech Support: support@supertargetsystems.com

2055 Comprehensive Dr. - Aurora, IL - 60505

www.supertargetsystems.com

Thank you for your business!