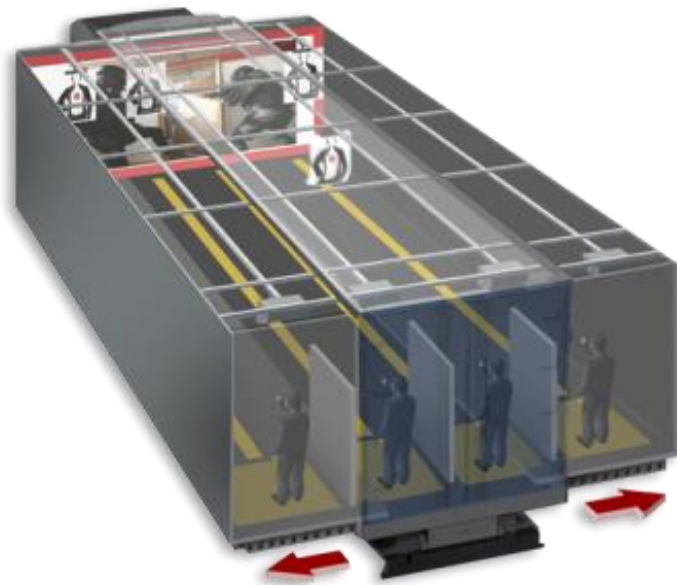
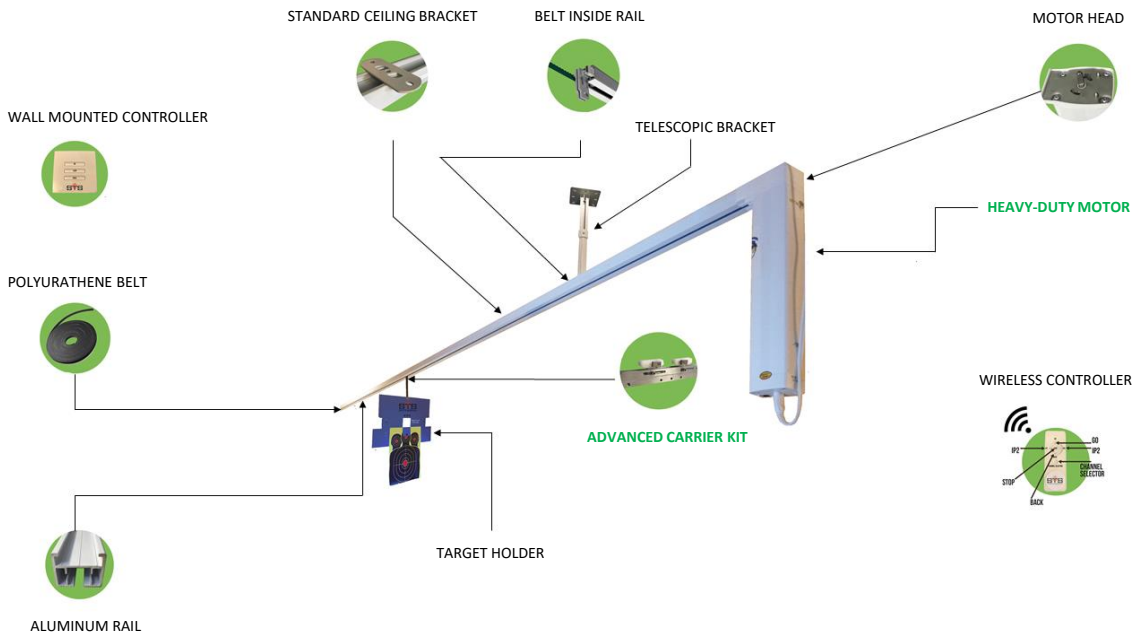


ESTES



**CONTAINER BASED SHOOTING
RANGE COMPONENTS**

HEAVY-DUTY TARGET RETRIEVAL SYSTEM



Target Retrieval System General Features

- Our new design is the most **INEXPENSIVE** system on the market using the most **ADVANCED MOTOR TECHNOLOGY**
- This all-inclusive DIY target retrieval system kit includes everything you need to install your range
- There is absolutely no need to go to the hardware store for anything !!!
- This all-inclusive kit is ideal for all type of ranges with limited budgets being either commercial, private or home-based (see our Basic or Heavy Duty series under "Ordering Options")
- It can be custom made and cut to your exact length specifications (example: from 50 feet, down to 48 feet)
- You can also cut the rails and the belt according to other desired lengths later on
- It is fully tested prior to shipping and has been proved to be exceptionally reliable in many installations

The mounting should take on average no more than 2-3 hours depending on the distance and skill level and over 25 feet we recommend a 2-3 person team. Prior to installation, please feel free to call and ask us any questions.

Ordering options:

- **Basic System:** Designed for private settings such as home-based installations, with light usage
- **Heavy Duty:** This option includes a heavy-duty carrier with belt tension-adjustable capability and high torque, long-life motor for heavy usage installations such as commercial shooting ranges
- **Motor Upward Kit:** Motor will be mounted on top of the rail for better motor protection and space saving, only when rails are suspended using our telescopic brackets



Motor Upward Kit

Our complete Target Retrieval System includes the following components:

Motor

- Speed: 0.5m/s
- Voltage: 24 VDC, 1.5A
- RPM: 112
- Load capacity: 200LB at 25FT, 100LB at 50FT
- Light touch- start function
- Wired or Wireless Activation
- Silent design
- Long lifetime
- Overload Protection
- Soft Start-Soft Stop
- Limits Settings
- Mid-range Stops
- Self-Learning Stop Points

Heavy duty, long life belt

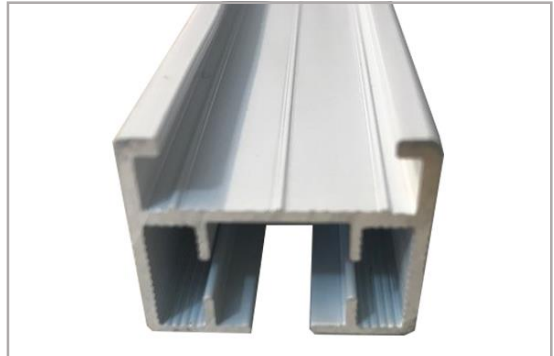
Heavy duty belt made Our belt is high flexibility (HPF) and can be spliced to specified lengths. Also, it can be pre-installed when ordering assembled tracks.

Note: The belt length must be double the range length plus 5 inches. Ex: 25 ft. range requires 50 ft. belt length. plus 5 inches.



Aluminum Rail

Heavy-duty aluminum rails that can be ceiling mounted or suspended



Target Holder

The Sharpshooter Range Target Holder is specifically designed for the overhead target holder assemblies found at indoor ranges but is suitable for a variety of shooting scenarios. Made of corrugated plastic, and featuring three fold-over flaps to hold almost any size paper target, the Range Target Holder is long lasting and versatile. Three replacement target clips add to the Sharpshooter Range Target Holder's longevity.



Wireless Remote Control

- Product Function: LANE SELECTION, STOP, FORWARD, RETRIEVE operation
- Battery: 3V x 2 (CR2325)
- Emission Distance: 200m outdoors, 35m indoors
- Emission Frequency: 433.92MHz
- Battery Life: about three years
- Ambient Temperature: 0~50°C
- Hardwired remote control available as an additional option
- IP1, IP2 (programmable intermediate stopping points)

Note: The wireless control is necessary to access and program the advanced motor functions.



Wired Remote Control (optional order separately)

Product Functions:

STOP, FORWARD, RETRIEVE operation.



Heavy-duty Carrier

Made out of sturdy metal with the self-lubricating plastic slider.

Features:

- 2 Adjustable Belt Clamps
- 3 Target Swing Bar Mounting Holes
- 2 Adjustable Belt Tensioners
- Target Camera Mounting Hole
- 2 Sliders made of self-lubricating, high quality-high endurance plastic



Target Swing Bar

- Pulley bar
- Associated hardware



Ceiling Mounting Brackets

Rail Ceiling Mounting, 2pc/m – Total qty based on distance





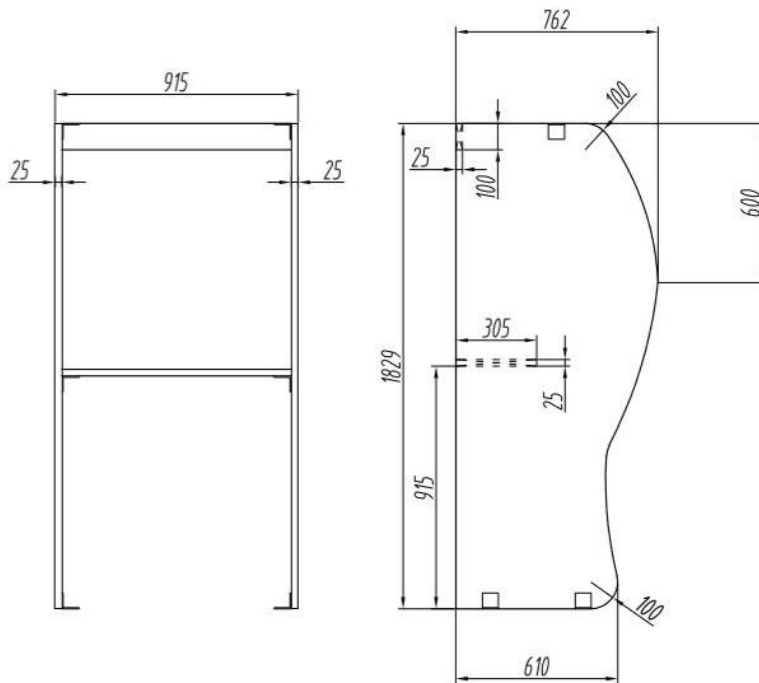
Particle Board Modular Shooting Stall

Our shooting stalls are modular, made by particle board and can be linked together easy and seamlessly offering the fastest, most efficient and cost effective way to deploy them in virtually any shooting range conditions, indoor or outdoor.

Our shooting stalls organize the firing line into defined shooting positions, provide a location for mounting individual target controls, and offer a shelf for shooters to use.

STS Shooting stalls provide protection from adjacent shooting positions by minimizing side blast interference reducing the hazard of misdirected shots. This provides a very safe environment when on the firing line.

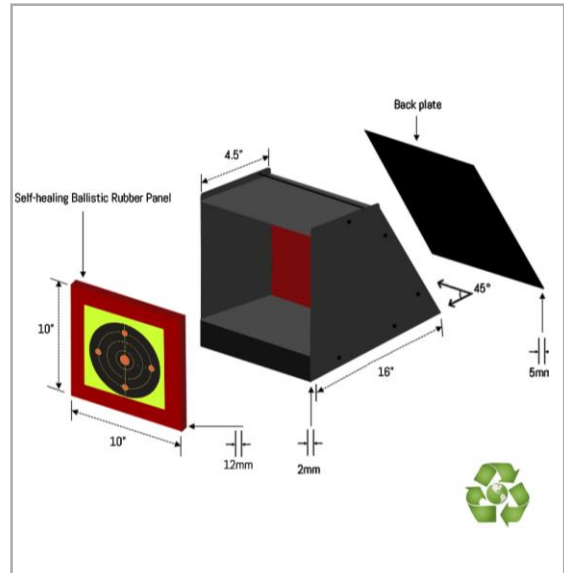
Specifications



Mobile Bullet Traps

Our bullet traps are currently the BEST, SAFEST and MOST INEXPENSIVE Mobile Bullet Trap Series available on the market. It is made from steel for exceptional durability, and includes a ballistic rubber panel positioned in front of the steel cage that will entrap most pellets and slow down or deflect the other calibers enough to be then stopped within the inside rubberized medium.

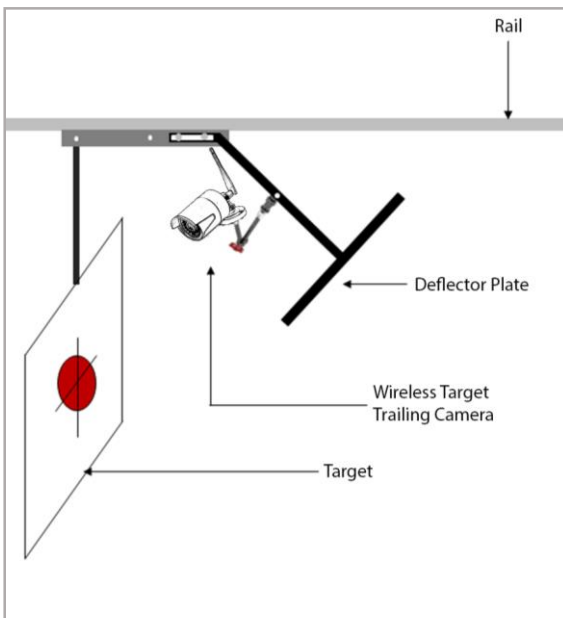
As an extra precaution, some of our bullet traps have the back panel of the cage made of AR500 armor steel that will stop pretty much anything that might penetrate the inside medium. The ballistic rubber front panel and the rubberized medium inside the cage ensures that NO lead dust will be generated due to impact or very minimal as well as NO noise due to impact. These are the most advanced and most efficient bullet traps on the market and the most inexpensive!



Key Features

- Portable (mobile, can be moved around)
- No LEAD dust generated
- No impact noise
- Allow for easy lead retrieval
- Environmentally friendly
- Safest (AR500 armor steel plate as a backstop)
- Custom sizes available

ACCESSORIES

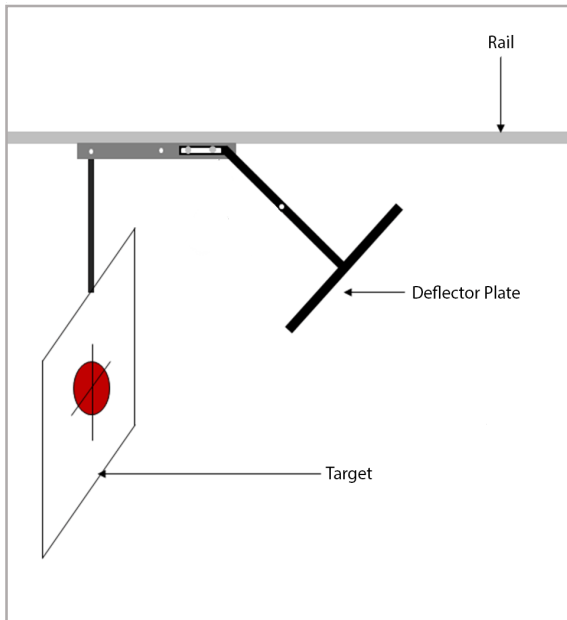


Target Trailing Camera Kit

The TTC-100 is a camera kit that is mounted typically behind the carrier deflector and can transmit wirelessly and continuously the target image to a wireless display located in the shooter's stall. This is a plug and play system, battery operated that requires minimum or no setup.

General Features

- Just turn on the camera and the monitor and visualize your target instantaneously!
- True Plug & Play
- NO software to download or setup
- Wireless, 7" TFT display, 800 x 480 RGB, 5V power with internal rechargeable backup battery
- Wireless Heavy Duty camera: aluminum body, 600 TVL with IR technology, DC 5V power
- 2 x Rechargeable lithium-ion battery pack w/charger (5-6 hour run time) for powering the camera and monitor



Carrier Bullet Deflector

The new Carrier Bullet Deflector protects the carrier and parts of the rail behind it from random shots, up to 9mm caliber. It is made of steel and can easily be placed at 45 degrees angle in front of the carrier using the mounting screws that attach to the carrier body.

Deflector Plate : 10" X 5"
Mounting Arm Length: 5"
Resistance: up to 9mm caliber

Rail Guard

With a gold-galvanized finish and a half-slot construction for easy mounting, the channel can also be used to protect the aluminum rails from random shots coming from the sides. They can be mounted directly on the ceiling and the aluminum rail can slide inside. Premier gold-galvanized finish creates a non-porous barrier for protection from moisture and air resists blistering or peeling. Made of 12 gauge metal.

Available in 5 feet and 10 feet variations.



(800) 556-3162

sales@supertargetsystems.com

www.supertargetsystems.com

2055 Comprehensive Dr. Aurora, IL - 60505